

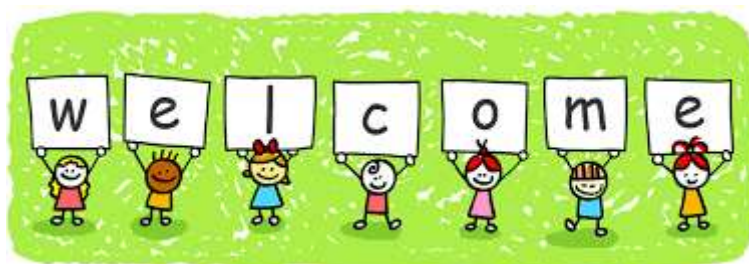


Thomastown Meadows Primary School

SCHOOL WELCOME LETTER

At Thomastown Meadows Primary School, we are honest, respectful and show empathy. We are happy, active and independent learners contributing positively to society.

Honesty, Empathy Respect,



Welcome to Thomastown Meadows Primary School. We opened in 1980 and we are safely nestled in a built up residential area with established housing. We currently have an enrolment of approximately 330 students. The school is a multi-cultural diverse community with a high proportion of students being from diverse backgrounds where English is not spoken at home.



At Thomastown Meadows Primary School, we see ourselves as a community of learners, eager to learn, to improve and to do our best at all times. Our values underpin all that we do and we want our students to become resilient and optimistic. We strive to ensure all our students find their school experience a truly positive and memorable one. Our teachers seek to empower our students to actively seek out learning opportunities and to proactively make good choices in life.

Thomastown Meadows Primary School has a zero tolerance for child abuse and is committed to acting in the best interests of children by keeping them safe at all times. Thomastown Meadows is committed to implementing the

Seven 7 Child Safe Standards:

1. Strategies to embed an organisational culture of child safety
2. A Child Safe Policy
3. A Child Safe Code of Conduct
4. Screening, supervision, training and other human resource practices that reduce the risk of child abuse
5. Procedures to responding to and reporting suspected child abuse
6. Strategies to identify and reduce or remove the risk of abuse of a child
7. Strategies to promote child participation and empowerment.



The Child Safe Standards fall under the **Ministerial Order 870-Managing the Risk of Child Abuse in Schools**. Thomastown Meadows is compliant in the required standards for child safety and will continue to embed these policies and practices within the school.

Starting school can be stressful for children. The buildings are bigger, there are more children and they are the smallest in the playground. There are fewer adults and more rules, which they don't know and for many the classroom will be more formal than it was at kindergarten.

Australian research has found that everyone involved in kinder to school transition experience an emphasis on different elements:

- **Children** are concerned about rules and friendships,
- **Parents** emphasis is on their child's social and emotional adjustments and
- **Teachers** give priority to students being able to work as a part of a larger group and demonstrate self-care and independence as a starting point.



At Thomastown Meadows Primary School our core purpose is to ensure that students are supported to reach their full potential. Teaching in the modern time brings challenges for us all. The need to guide our children to become literate and numerate continues to be an important priority. The technological age allows us the opportunity to make this a far more interesting journey and our school aims to be at the forefront of skilling the children in the use of the ever-changing tools that will be a constant and important part of their personal and vocational lives.

We have implemented a 1-1 Student iPad Program for all students from F-6. This program has ensured all our students have their own iPad for use all year round not just whilst they are school but also at home.

At Thomastown Meadows Primary School we take pride in our strong sense of community. Parents and staff share a common goal to develop in our students a confident sense of self worth, a desire for excellence and a sense of responsibility to help build a better world. The school believes our students can be inspired to reach their goals when there is a strong partnership between home and school. We believe it is important that:

- Learning is valued, thinking is encouraged and creativity and imagination fostered
- Staff are keen to share a love of learning with their students
- A wealth of learning opportunities and challenges are offered throughout her school
- Parents participate in many facets of school life, including classroom involvement, excursions, parents groups, fundraising, etc
- Special programs are offered in a range of curriculum and student wellbeing areas
- A comprehensive transition program is offered for Foundation and Year 6 students, and the school also ensures all students are well prepared for the next stage in their educational journey through our intra school transition program
- The life of our students is enriched through an exciting range of programs and activities that include Visual Arts, Physical Education, Science, Resilience Programs, Lunchtime Clubs and After School Activities
- Student wellbeing is fostered by linking learning and wellbeing to create a positive school culture.

We have dedicated and friendly staff in our school. The wonderful teamwork that exists within the school as part of the culture is exemplary. As a parent, deciding where to enrol your child when they transition to school is both a difficult and important decision.

I welcome you to visit our beautiful school, make an appointment for a tour and ask all of those questions that will assist you in making an important decision about this journey that your school aged child is ready to embark on and one, which encourages your child to confidently and willingly become a lifelong learner.

I look forward to meeting you and your child.

Keep Smiling

Fiona Rosa

Fiona Rosa | Principal | Thomastown Meadows Primary School

Department of Education and Training

13-21 Diplomat Drive Thomastown 3074

T: 03 9466 1322 | **03 9464 1649** | **0409000718**

thomastown.meadows.ps@edumail.vic.gov.au